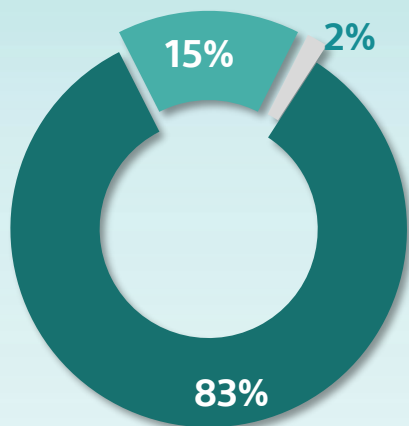
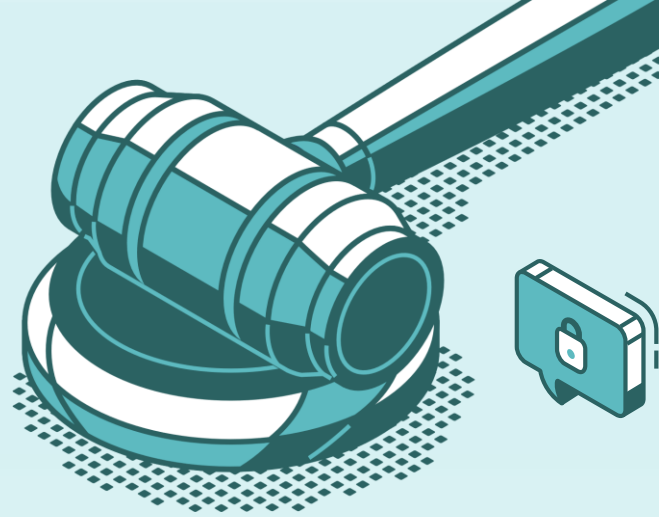


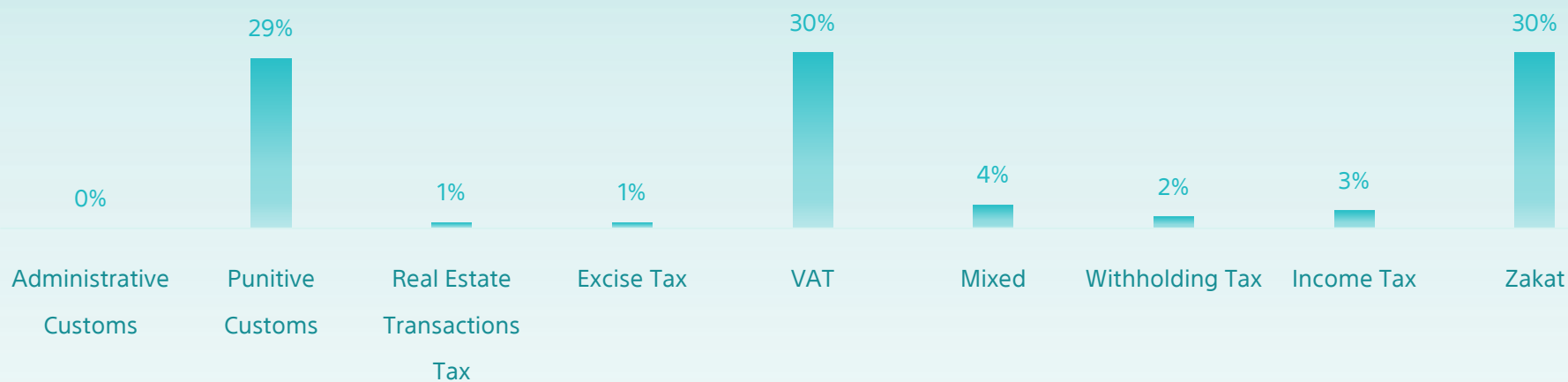
All Cases Report

Until Sep 2023



Initial Appeal Reconsider

Classification	Initial	Appeal	Reconsider	Total
Zakat	38,958	9,809	1,906	50,673
Income Tax	3371	996	105	4,472
Withholding Tax	1,937	795	107	2,839
Mixed	4,602	1,375	160	6,137
VAT	41,228	7,408	815	49,451
Excise Tax	746	227	20	993
Real Estate Transactions Tax	1,300	186	27	1,513
Punitive Custom	42,376	3,963	370	46,709
Administrative Customs	437	183	51	671
Total	134,955	24,942	3,561	163,458



Top cases classification / type



Fine (VAT)
11%



Tax Assessment-
Discretion (Zakat)
15%



Tax Assessment -
Accounts (Zakat)
16%



Tax Return & Fine (VAT)
9%



Disposing of a restricted cleared merchandise
with a pledge not to dispose of.
(Customs)
18%

